

## Springer Journal – Regional Environmental Change

### LENGTH OF PAPER

Our goal is to encourage original research articles of up to 12 published pages, inclusive of all text, references, figures and tables, which is equivalent to approximately 8,000 words if the manuscript were composed of text alone. Figures and tables are counted as 300 words each. Some leniency in the length up to the equivalence of 9,000 words is permitted subject to editorial discretion; however, submissions excessively over the limit will be returned to the authors before review

### LANGUAGE

We appreciate any efforts that you make to ensure that the language is corrected before submission. This will greatly improve the legibility of your paper if English is not your first language. British English or American English spelling and terminology may be used, but either one should be followed consistently throughout the article.

### ARTICLE TYPE

1. **Review Articles** (upto 9000 words of text), summarizing an important area of science concerning regional environmental change. Editors suggest that authors contact them to discuss proposed review topics with them before finalization and submission of reviews papers.
2. **Original Research Articles** (upto 8000), presenting new evidence from analyses of empirical data or else more theoretical investigations of regional environmental change. The findings should always be of interest to an international research community.
3. **Short Communications** (up to 3000 words, max 1 figure and 1 table), presenting important findings of similar nature. These submissions will receive high review priority and are, after acceptance, normally published in the next available issue of the journal.
5. **An Essay** is a submitted opinion or think piece, subject to review, which has a lower standard of evidence required to justify conclusions than a research article. Essays are published rarely and at the complete discretion of the editors.
4. **A Commentary** is an unsolicited and uninvited critique of a paper previously published in Regional Environmental Change. Authors of the original piece are generally invited to prepare a response to the critique, which would be published concurrently with the Commentary. Commentaries and responses are reviewed on the basis of fairness, balance and scientific merit.
5. **Editorial**  
By invitation only.

### MANUSCRIPT SUBMISSION

- **Manuscript Submission**  
Submission of a manuscript implies: that the work described has not been published before; that it is not under consideration for publication anywhere else; that its publication has been approved by all co-authors, if any, as well as by the responsible authorities – tacitly or explicitly – at the institute where the work has been carried out. The publisher will not be held legally responsible should there be any claims for compensation.
- **Permissions**  
Authors wishing to include figures, tables, or text passages that have already been published elsewhere are required to obtain permission from the copyright owner(s) for both the print and online format and to include evidence that such permission has been granted when submitting

their papers. Any material received without such evidence will be assumed to originate from the authors.

- **Online Submission**

Authors should submit their manuscripts online. Electronic submission substantially reduces the editorial processing and reviewing times and shortens overall publication times. Please follow the hyperlink “Submit online” on the right and upload all of your manuscript files following the instructions given on the screen.

- **Proceedings, etc**

In the case that parts of the text have been published as conference proceedings, project reports, working papers or similar, this needs to be declared during submission - editors will then assess on a case by case basis whether the paper may still be considered original.

## **PREPARING THE MANUSCRIPT**

### **Title Page**

- The title page is part of the manuscript and must include:
  - The full name(s), professional affiliations and e-mail addresses of all author(s)
  - A concise and informative title, indicating the specific region the work relates to (consider Search Engine Optimization when choosing the title)
  - The full professional address, e-mail address and telephone number of the corresponding author
  - Abstract and keywords (see below)
  - Length of the manuscript (see below)

### **Abstract**

Please provide an abstract of 150 to 250 words. The abstract should be highly informative about the findings and conclusions from the paper, and it should not contain any undefined abbreviations or unspecified references.

### **Keywords**

Please provide 4 to 6 keywords which can be used for indexing purposes.

### **Length of the manuscript**

The length of the manuscript must be indicated, consisting of

- The number of words, counting from the top of the title page, including abstract, keywords and acknowledgements to the end of text (before the reference list)
- The number of figures and tables (counting as 300 words each)
- The number of words, including the count for the figures and tables, must not exceed the length of text permitted for the article type
- We urge authors to take full advantage of our capacity for Electronic Supplemental Material. Authors who find the page limit to be particularly restrictive, especially as a result of disciplinary differences, are encouraged to contact the journal office ([reec@imbe.fr](mailto:reec@imbe.fr)) for guidance.

### **Text**

#### **Text Formatting**

Manuscripts should be submitted in Word.

- Use a normal, plain font for text.
- Use italics for emphasis.

- Use the automatic page numbering function to number the pages.
- Use the automatic line numbering function to number all lines of the text.
- Do not use any field functions.
- Use tab stops or other commands for indents, not the space bar.
- Use the table function, not spreadsheets, to make tables.
- Use the equation editor or MathType for equations.
- Save your file in docx format (Word 2007 or higher) or doc format (older Word versions).

Manuscripts with mathematical content can also be submitted in LaTeX.

- [LaTeX macro package \(zip, 182 kB\)](#)

### **Headings**

Please use no more than three levels of displayed headings. Do not use acronyms.

### **Abbreviations**

Abbreviations should be defined at first mention and used consistently thereafter.

### **Footnotes**

Footnotes can be used to give important additional information, which may include the citation of a reference included in the reference list. They should not consist solely of a reference citation, and they should never include the bibliographic details of a reference.

Footnotes should not contain any figures or tables.

Footnotes to the text are numbered consecutively; those to tables should be indicated by superscript lower-case letters (or asterisks for significance values and other statistical data).

Footnotes to the title or the authors of the article are not given reference symbols.

Always use footnotes instead of endnotes.

### **Acknowledgments**

Acknowledgments of people, grants, funds, etc. should be placed in a separate section before the reference list. The names of funding organizations should be written in full.

### **Scientific Style**

Please always use internationally accepted signs and symbols for units (SI units).

## **REFERENCES**

### **Citation**

Cite references in the text by name and year in parentheses. Some examples:

- Negotiation research spans many disciplines (Thompson 1990).
- This result was later contradicted by Becker and Seligman (1996).
- This effect has been widely studied (Abbott 1991; Barakat et al. 1995; Kelso and Smith 1998; Medvec et al. 1999).

### **Reference list**

The list of references should only include works that are cited in the text and that have been published or accepted for publication. Personal communications and unpublished works should only be mentioned in the text. Do not use footnotes or endnotes as a substitute for a reference list.

Reference list entries should be alphabetized by the last names of the first author of each work.

#### *Journal article*

Gamelin FX, Baquet G, Berthoin S, Thevenet D, Nourry C, Nottin S, Bosquet L (2009) Effect of high intensity intermittent training on heart rate variability in prepubescent children. *Eur J Appl Physiol* 105:731-738. doi: 10.1007/s00421-008-0955-8

The names of all authors should be provided, the usage of “et al” in long author lists will not be accepted. The doi-number should always be indicated when it exists.

#### *Book*

South J, Blass B (2001) *The future of modern genomics*. Blackwell, London

#### *Book chapter*

Brown B, Aaron M (2001) The politics of nature. In: Smith J (ed) *The rise of modern genomics*, 3rd edn. Wiley, New York, pp 230-257

#### *Online document*

Cartwright J (2007) Big stars have weather too. IOP Publishing PhysicsWeb. <http://physicsweb.org/articles/news/11/6/16/1>. Accessed 26 June 2007

#### *Dissertation*

Trent JW (1975) *Experimental acute renal failure*. Dissertation, University of California  
Always use the standard abbreviation of a journal’s name according to the ISSN List of Title Word Abbreviations, see

[ISSN.org LTWA](http://www.issn.org/LTWA)

If you are unsure, please use the full journal title.

For authors using EndNote, Springer provides an output style that supports the formatting of in-text citation list.

[EndNote style \(zip, 2 kB\)](#)

### **Request Figures and Tables**

Authors are required to separate figures and tables from the main text file.

Any figure captions containing acronyms should be explained.

### **Tables**

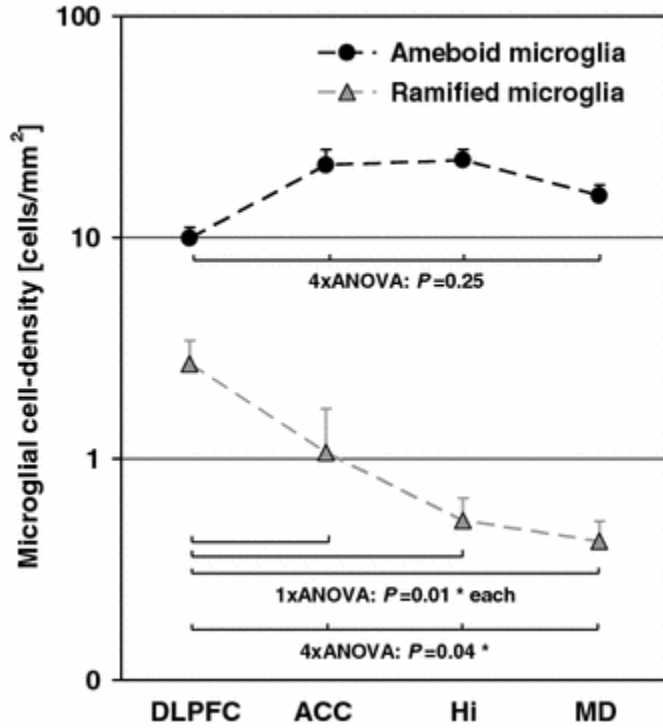
- All tables are to be numbered using Arabic numerals.
- Tables should always be cited in text in consecutive numerical order.
- For each table, please supply a table caption (title) explaining the components of the table.
- Identify any previously published material by giving the original source in the form of a reference at the end of the table caption.
- Footnotes to tables should be indicated by superscript lower-case letters (or asterisks for significance values and other statistical data) and included beneath the table body.

### **Artwork and Illustrations Guidelines**

- Electronic Figure Submission
  - Supply all figures electronically.
  - Illustrations should only contain essential content for the topic of the paper.
  - All lettering should be scaled such as to allow the smallest possible printing of the illustration.

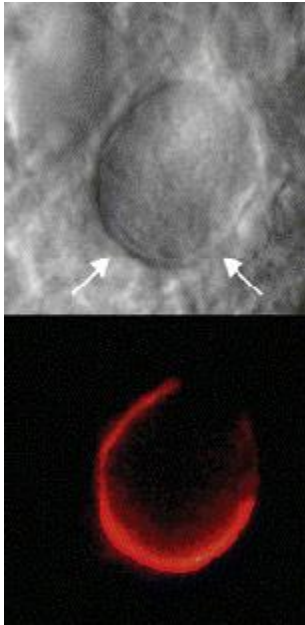
- For vector graphics, the preferred format is EPS; for halftones, please use TIFF format. MSOffice files are also acceptable. (Indicate what graphics program was used to create the artwork.)
- Vector graphics containing fonts must have the fonts embedded in the files.
- Name your figure files with "Fig" and the figure number, e.g., Fig1.eps.

Line Art



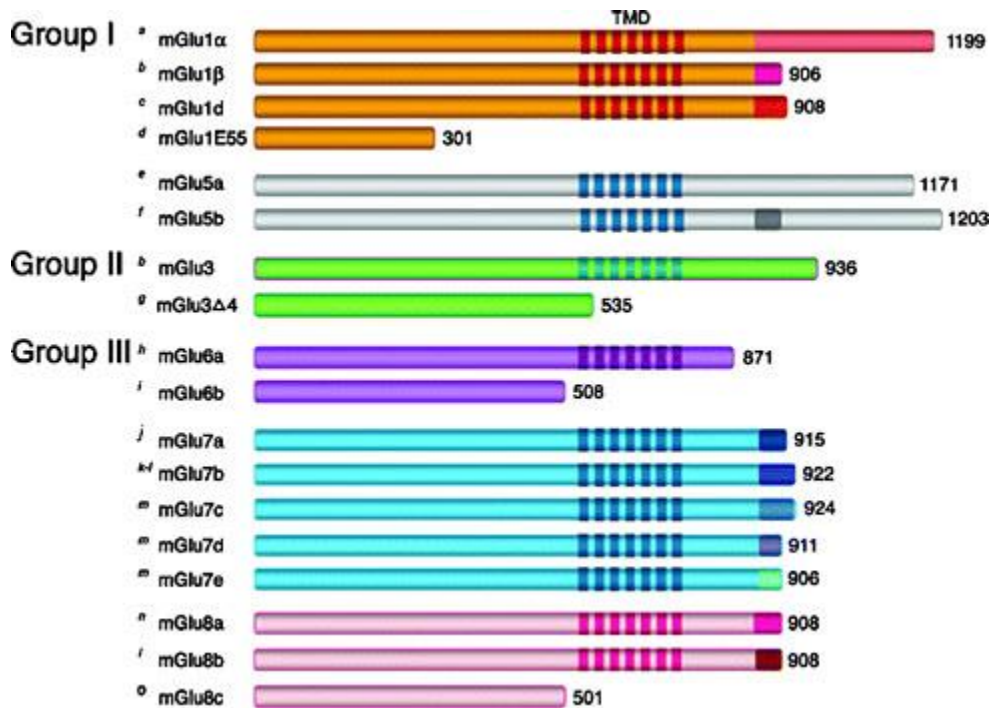
- Definition: Black and white graphic with no shading.
- Do not use faint lines and/or lettering and check that all lines and lettering within the figures are legible at final size.
- All lines should be at least 0.1 mm (0.3 pt) wide.
- Scanned line drawings and line drawings in bitmap format should have a minimum resolution of 1200 dpi.
- Vector graphics containing fonts must have the fonts embedded in the files.

### *Halftone Art*



- Definition: Photographs, drawings, or paintings with fine shading, etc.
- If any magnification is used in the photographs, indicate this by using scale bars within the figures themselves.
- Halftones should have a minimum resolution of 300 dpi.

## Combination Art



- Definition: a combination of halftone and line art, e.g., halftones containing line drawing, extensive lettering, color diagrams, etc.
- Combination artwork should have a minimum resolution of 600 dpi.

## Colour Art

- Colour art is free of charge for online and print publication.
- If black and white will be shown in the print version, make sure that the main information will still be visible. Many colours are not distinguishable from one another when converted to black and white. A simple way to check this is to make a xerographic copy to see if the necessary distinctions between the different colours are still apparent.
- If the figures will be printed in black and white, do not refer to colour in the captions.
- Colour illustrations should be submitted as RGB (8 bits per channel).

## Figure Lettering

- To add lettering, it is best to use Helvetica or Arial (sans serif fonts).
- Keep lettering consistently sized throughout your final-sized artwork, usually about 2–3 mm (8–12 pt).
- Variance of type size within an illustration should be minimal, e.g., do not use 8-pt type on an axis and 20-pt type for the axis label.
- Avoid effects such as shading, outline letters, etc.
- Do not include titles or captions within your illustrations.

## Figure Numbering

- All figures are to be numbered using Arabic numerals.

- Figures should always be cited in text in consecutive numerical order.
- Figure parts should be denoted by lowercase letters (a, b, c, etc.).
- If an appendix appears in your article and it contains one or more figures, continue the consecutive numbering of the main text. Do not number the appendix figures, "A1, A2, A3, etc." Figures in online appendices (Electronic Supplementary Material) should, however, be numbered separately.

#### *Figure Captions*

- Each figure should have a concise caption describing accurately what the figure depicts. Include the captions in the text file of the manuscript, not in the figure file.
- Figure captions begin with the term Fig. in bold type, followed by the figure number, also in bold type.
- No punctuation is to be included after the number, nor is any punctuation to be placed at the end of the caption.
- Identify all elements found in the figure in the figure caption; and use boxes, circles, etc., as coordinate points in graphs.
- Identify previously published material by giving the original source in the form of a reference citation at the end of the figure caption.

#### *Figure Placement and Size*

- When preparing your figures, size figures to fit in the column width.
- For most journals the figures should be 39 mm, 84 mm, 129 mm, or 174 mm wide and not higher than 234 mm.
- For books and book-sized journals, the figures should be 80 mm or 122 mm wide and not higher than 198 mm.

#### **Permissions**

If you include figures that have already been published elsewhere, you must obtain permission from the copyright owner(s) for both the print and online format. Please be aware that some publishers do not grant electronic rights for free and that Springer will not be able to refund any costs that may have occurred to receive these permissions. In such cases, material from other sources should be used.

#### **Accessibility**

In order to give people of all abilities and disabilities access to the content of your figures, please make sure that

- All figures have descriptive captions (blind users could then use a text-to-speech software or a text-to-Braille hardware)
- Patterns are used instead of or in addition to colors for conveying information (colorblind users would then be able to distinguish the visual elements)
- Any figure lettering has a contrast ratio of at least 4.5:1

#### **ELECTRONIC SUPPLEMENTARY MATERIAL**

Springer accepts electronic multimedia files (animations, movies, audio, etc.) and other supplementary files to be published online along with an article or a book chapter. This feature can add dimension to the author's article, as certain information cannot be printed or is more convenient in electronic form.



### **Submission**

- Supply all supplementary material in standard file formats.
- Please include in each file the following information: article title, journal name, author names; affiliation and e-mail address of the corresponding author.
- To accommodate user downloads, please keep in mind that larger-sized files may require very long download times and that some users may experience other problems during downloading.

### **Audio, Video, and Animations**

- Always use MPEG-1 (.mpg) format.

### **Text and Presentations**

- Submit your material in PDF format; .doc or .ppt files are not suitable for long-term viability.
- A collection of figures may also be combined in a PDF file.

### **Spreadsheets**

- Spreadsheets should be converted to PDF if no interaction with the data is intended.
- If the readers should be encouraged to make their own calculations, spreadsheets should be submitted as .xls files (MS Excel).

### **Specialized Formats**

- Specialized format such as .pdb (chemical), .wrl (VRML), .nb (Mathematica notebook), and .tex can also be supplied.

### **Collecting Multiple Files**

- It is possible to collect multiple files in a .zip or .gz file.

### **Numbering**

- If supplying any supplementary material, the text must make specific mention of the material as a citation, similar to that of figures and tables.
- Refer to the supplementary files as “Online Resource”, e.g., “... as shown in the animation (Online Resource 3)”, “... additional data are given in Online Resource 4”.
- Name the files consecutively, e.g. “ESM\_3.mpg”, “ESM\_4.pdf”

### **Captions**

- For each supplementary material, please supply a concise caption describing the content of the file.

### **Processing of supplementary files**

- Electronic supplementary material will be published as received from the author without any conversion, editing, or reformatting.

### **Accessibility**

In order to give people of all abilities and disabilities access to the content of your supplementary files, please make sure that:

- The manuscript contains a descriptive caption for each supplementary material
- Video files do not contain anything that flashes more than three times per second (so that users prone to seizures caused by such effects are not put at risk)

### **DOES SPRINGER PROVIDE LANGUAGE SUPPORT?**

Manuscripts that are accepted for publication will be checked by our copyeditors for spelling and formal style. This may not be sufficient if English is not your native language and substantial editing would be required. In that case, you may want to have your manuscript edited by a native speaker prior to submission. Clear and concise language is required for acceptance of your paper.

The following editing service provides language editing for scientific articles in all areas Springer publishes in:

[Edanz English editing for scientists](#)

Use of an editing service is neither a requirement nor a guarantee of acceptance for publication. Please contact the editing service directly to make arrangements for editing and payment.

### **For Authors from China**

文章在投稿前进行专业的语言润色将对作者的投稿进程有所帮助。作者可自愿选择使用Springer推荐的编辑服务，使用与否并不作为判断文章是否被录用的依据。提高文章的语言质量将有助于审稿人理解文章的内容，通过对学术内容的判断来决定文章的取舍，而不会因为语言问题导致直接退稿。作者需自行联系Springer推荐的编辑服务公司，协商编辑事宜。

[理文编辑](#)

### **For Authors from Japan**

ジャーナルに論文を投稿する前に、ネイティブ・スピーカーによる英文校閲を希望されている方には、Edanz社をご紹介します。サービス内容、料金および申込方法など、日本語による詳しい説明はエダンズグループジャパン株式会社の下記サイトをご覧ください。

[エダンズグループジャパン](#)

### **For Authors from Korea**

영어 논문 투고에 앞서 원어민에게 영문 교정을 받고자 하시는 분들께 Edanz 회사를 소개해 드립니다. 서비스 내용, 가격 및

신청 방법 등에 대한 자세한 사항은 저희 Edanz Editing Global 웹사이트를 참조해 주시면 감사하겠습니다.

[Edanz Editing Global](#)

Please contact the editing service directly to make arrangements for editing and payment.

### **ETHICAL RESPONSIBILITY OF THE AUTHORS**

This journal is committed to upholding the integrity of the scientific record. As a member of the Committee on Publication Ethics (COPE) the journal will follow the COPE guidelines on how to deal with potential acts of misconduct.

Authors should refrain from misrepresenting research results which could damage the trust in the journal, the professionalism of scientific authorship, and ultimately the entire scientific endeavour.

Maintaining integrity of the research and its presentation can be achieved by following the rules of good scientific practice, which include:

- The manuscript has not been submitted to more than one journal for simultaneous consideration.
- The manuscript has not been published previously (partly or in full), unless the new work concerns an expansion of previous work (please provide transparency on the re-use of material to avoid the hint of text-recycling (“self-plagiarism”).
- A single study is not split up into several parts to increase the quantity of submissions and submitted to various journals or to one journal over time (e.g. “salami-publishing”).
- No data have been fabricated or manipulated (including images) to support your conclusions.
- No data, text, or theories by others are presented as if they were the author’s own (“plagiarism”). Proper acknowledgements to other works must be given (this includes material that is closely copied (near verbatim), summarized and/or paraphrased), quotation marks are used for verbatim copying of material, and permissions are secured for material that is copyrighted.

**Important note:** the journal may use software to screen for plagiarism.

- Consent to submit has been received explicitly from all co-authors, as well as from the responsible authorities - tacitly or explicitly - at the institute/organization where the work has been carried out, **before** the work is submitted.
- Authors whose names appear on the submission have contributed sufficiently to the scientific work and therefore share collective responsibility and accountability for the results.

In addition:

- Changes of authorship or in the order of authors are not accepted **after** acceptance of a manuscript.
- Requesting to add or delete authors at revision stage, proof stage, or after publication is a serious matter and may be considered when justifiably warranted. Justification for changes in authorship must be compelling and may be considered only after receipt of written approval from all authors and a convincing, detailed explanation about the role/deletion of the new/deleted author. In case of changes at revision stage, a letter must accompany the revised manuscript. In case of changes after acceptance or publication, the request and documentation must be sent via the Publisher to the Editor-in-Chief. In all cases, further documentation may be required to support your request. The decision on accepting the change rests with the Editor-in-Chief of the journal and may be turned down. Therefore authors are strongly advised to ensure the correct author group, corresponding author, and order of authors at submission.
- Upon request authors should be prepared to send relevant documentation or data in order to verify the validity of the results. This could be in the form of raw data, samples, records, etc.

If there is a suspicion of misconduct, the journal will carry out an investigation following the COPE guidelines. If, after investigation, the allegation seems to raise valid concerns, the accused author will be contacted and given an opportunity to address the issue. If misconduct has been established beyond reasonable doubt, this may result in the Editor-in-Chief’s implementation of the following measures, including, but not limited to:

- If the article is still under consideration, it may be rejected and returned to the author.
- If the article has already been published online, depending on the nature and severity of the infraction, either an erratum will be placed with the article or in severe cases complete

retraction of the article will occur. The reason must be given in the published erratum or retraction note.

- The author's institution may be informed.

### **COMPLIANCE WITH ETHICAL STANDARDS**

To ensure objectivity and transparency in research and to ensure that accepted principles of ethical and professional conduct have been followed, authors should include information regarding sources of funding, potential conflicts of interest (financial or non-financial), informed consent if the research involved human participants, and a statement on welfare of animals if the research involved animals. Authors should include the following statements (if applicable) in a separate section entitled "Compliance with Ethical Standards" before the References when submitting a paper:

- Disclosure of potential conflicts of interest
- Research involving Human Participants and/or Animals
- Informed consent

Please note that standards could vary slightly per journal dependent on their peer review policies (i.e. double blind peer review) as well as per journal subject discipline. Before submitting your article check the Instructions for Authors carefully.

The corresponding author should be prepared to collect documentation of compliance with ethical standards and send if requested during peer review or after publication.

The Editors reserve the right to reject manuscripts that do not comply with the above-mentioned guidelines. The author will be held responsible for false statements or failure to fulfill the above-mentioned guidelines.

### **DISCLOSURE OF POTENTIAL CONFLICTS OF INTEREST**

Authors must disclose all relationships or interests that could have direct or potential influence or impart bias on the work. Although an author may not feel there is any conflict, disclosure of relationships and interests provides a more complete and transparent process, leading to an accurate and objective assessment of the work. Awareness of a real or perceived conflicts of interest is a perspective to which the readers are entitled. This is not meant to imply that a financial relationship with an organization that sponsored the research or compensation received for consultancy work is inappropriate. Examples of potential conflicts of interests **that are directly or indirectly related to the research** may include but are not limited to the following:

- Research grants from funding agencies (please give the research funder and the grant number)
- Honoraria for speaking at symposia
- Financial support for attending symposia
- Financial support for educational programs
- Employment or consultation
- Support from a project sponsor
- Position on advisory board or board of directors or other type of management relationships
- Multiple affiliations
- Financial relationships, for example equity ownership or investment interest
- Intellectual property rights (e.g. patents, copyrights and royalties from such rights)
- Holdings of spouse and/or children that may have financial interest in the work

In addition, interests that go beyond financial interests and compensation (non-financial interests) that may be important to readers should be disclosed. These may include but are not limited to personal relationships or competing interests directly or indirectly tied to this research, or professional interests or personal beliefs that may influence your research.

The corresponding author collects the conflict of interest disclosure forms from all authors. In author collaborations where formal agreements for representation allow it, it is sufficient for the corresponding author to sign the disclosure form on behalf of all authors. Examples of forms can be found [here](#). The corresponding author will include a summary statement in the text of the manuscript in a separate section before the reference list, that reflects what is recorded in the potential conflict of interest disclosure form(s).

See below examples of disclosures:

**Funding:** This study was funded by X (grant number X).

**Conflict of Interest:** Author A has received research grants from Company A. Author B has received a speaker honorarium from Company X and owns stock in Company Y. Author C is a member of committee Z.

If no conflict exists, the authors should state:

Conflict of Interest: The authors declare that they have no conflict of interest.

## **AFTER ACCEPTANCE**

Upon acceptance of your article you will receive a link to the special Author Query Application at Springer's web page where you can sign the Copyright Transfer Statement online and indicate whether you wish to order OpenChoice, offprints, or printing of figures in color.

Once the Author Query Application has been completed, your article will be processed and you will receive the proofs.

### **Open Choice**

In addition to the normal publication process (whereby an article is submitted to the journal and access to that article is granted to customers who have purchased a subscription), Springer provides an alternative publishing option: Springer Open Choice. A Springer Open Choice article receives all the benefits of a regular subscription-based article, but in addition is made available publicly through Springer's online platform SpringerLink.

[Springer Open Choice](#)

### **Copyright transfer**

Authors will be asked to transfer copyright of the article to the Publisher (or grant the Publisher exclusive publication and dissemination rights). This will ensure the widest possible protection and dissemination of information under copyright laws.

Open Choice articles do not require transfer of copyright as the copyright remains with the author. In opting for open access, the author(s) agree to publish the article under the Creative Commons Attribution License.

### **Offprints**

Offprints can be ordered by the corresponding author.

### **Color illustrations**

Online publication of color illustrations is free of charge. For color in the print version, authors will be expected to make a contribution towards the extra costs.

**Proof reading**

The purpose of the proof is to check for typesetting or conversion errors and the completeness and accuracy of the text, tables and figures. Substantial changes in content, e.g., new results, corrected values, title and authorship, are not allowed without the approval of the Editor.

After online publication, further changes can only be made in the form of an Erratum, which will be hyperlinked to the article.

**Online First**

The article will be published online after receipt of the corrected proofs. This is the official first publication citable with the DOI. After release of the printed version, the paper can also be cited by issue and page numbers.



<http://www.springer.com/journal/10113>

Regional Environmental Change  
Editor-in-Chief: Cramer, W.; Ford, J.D.  
ISSN: 1436-3798 (print version)  
ISSN: 1436-378X (electronic version)  
Journal no. 10113