

---

## Algorithms for the Diagnosis and Management of Head and Face Pain

# 2

Samer N. Narouze

This chapter will review different proposed algorithms to guide practitioners to make a precise diagnosis and hence better utilize interventional management for common headaches and facial pain syndromes.

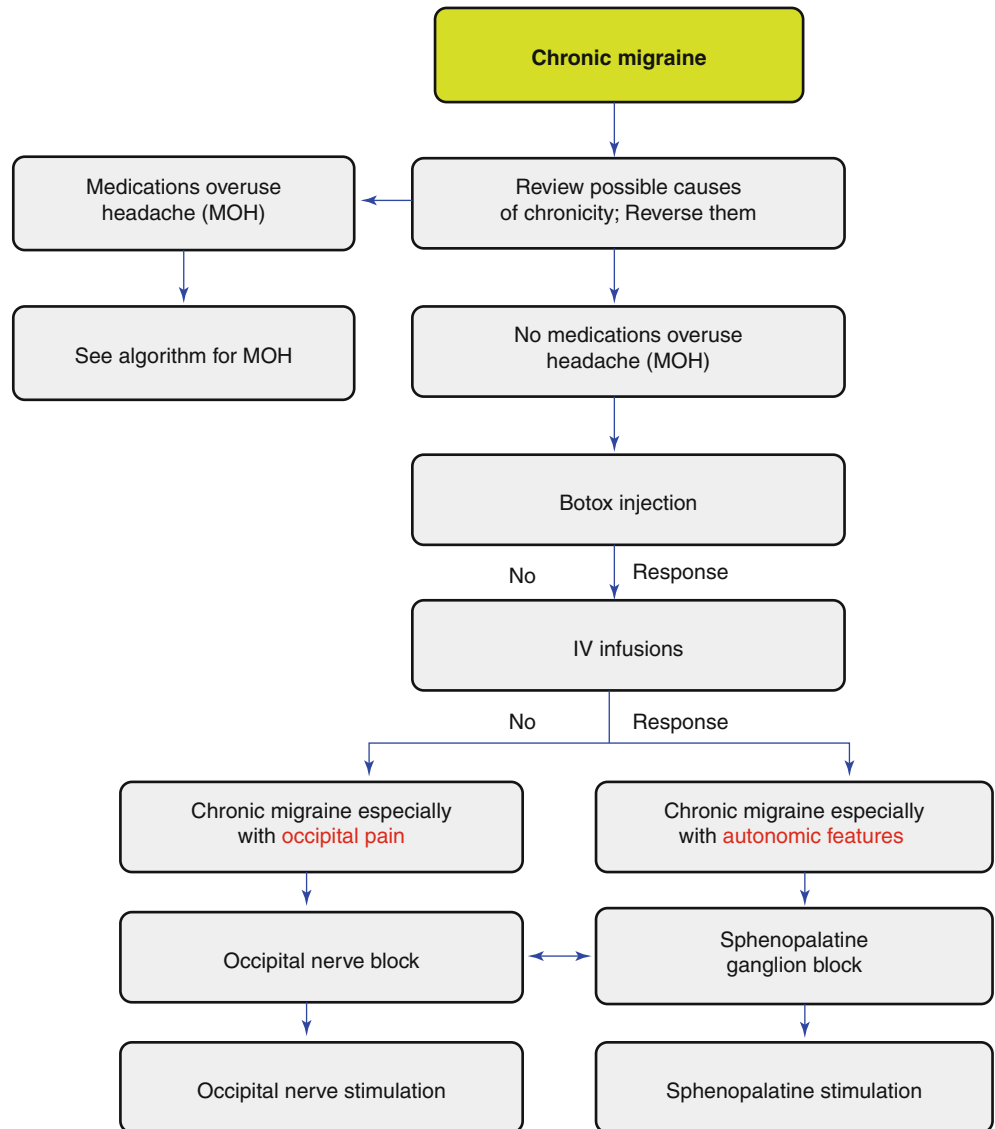
In intractable resistant headaches, patients usually benefit the most from a multidisciplinary approach incorporating

physical therapy, pharmacotherapy, psychotherapy (biofeedback and relaxation therapy), and the judicious utilization of interventional pain management modalities (Figs. 2.1, 2.2, 2.3, 2.4, and 2.5).

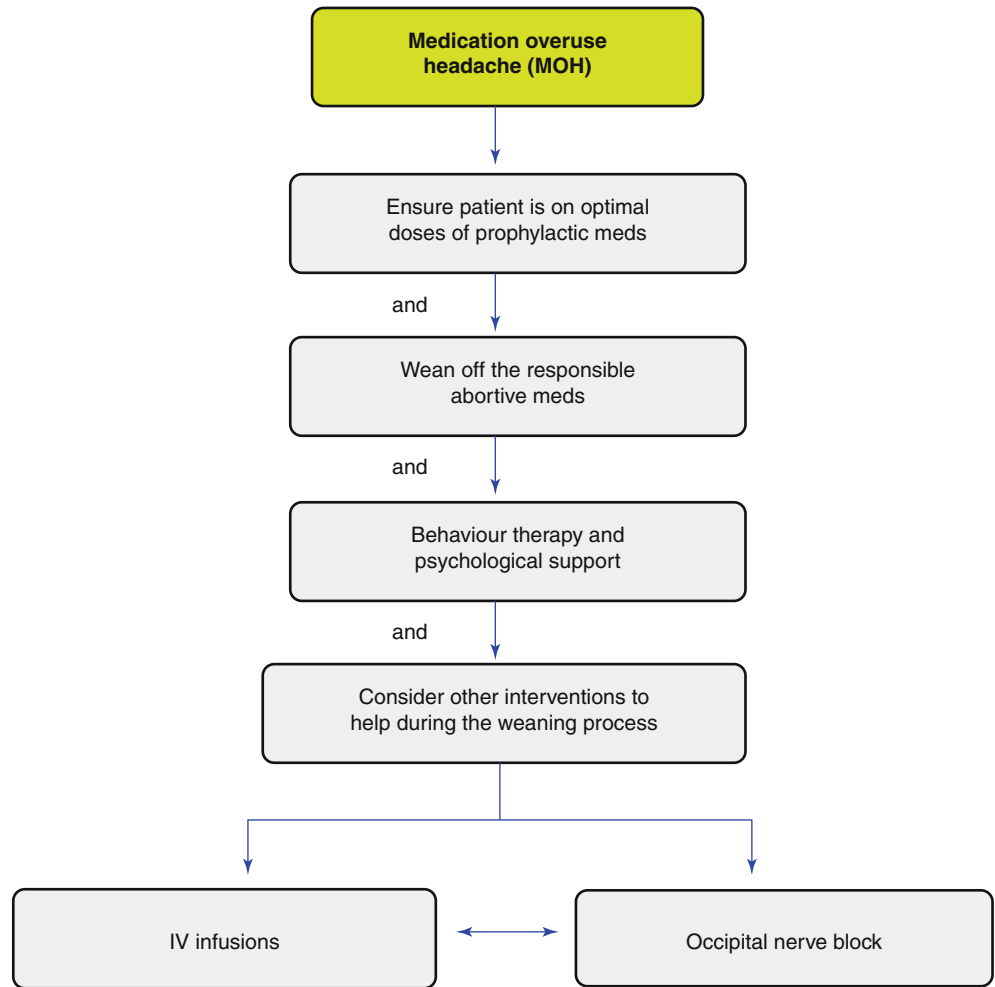
---

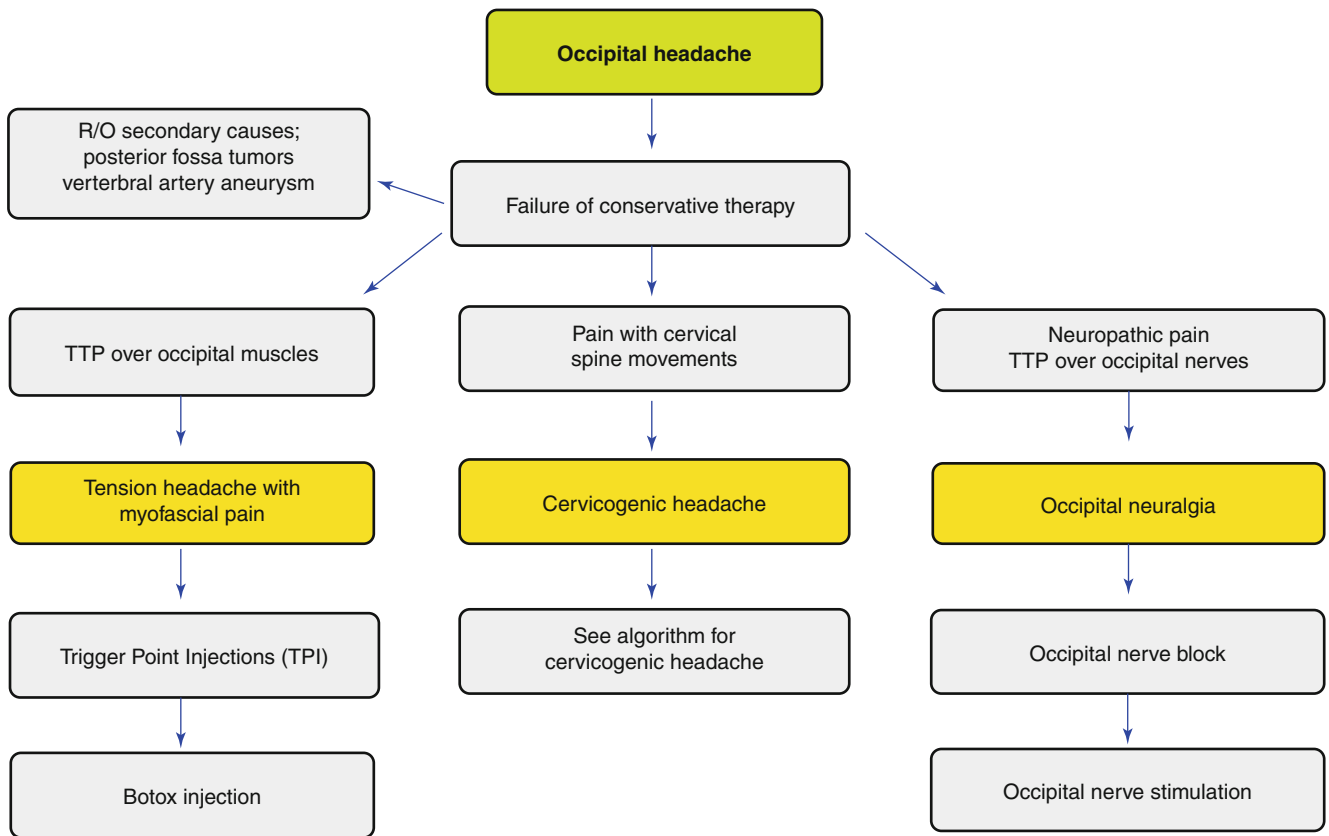
S.N. Narouze, MD, PhD  
Center for Pain Medicine, Western Reserve Hospital,  
1900 Twenty-Third Street, Cuyahoga Falls, OH 44223, USA  
e-mail: [samernarouze@westernreservehospital.org](mailto:samernarouze@westernreservehospital.org),  
[narouzs@hotmail.com](mailto:narouzs@hotmail.com)

**Fig. 2.1** Chronic migraine

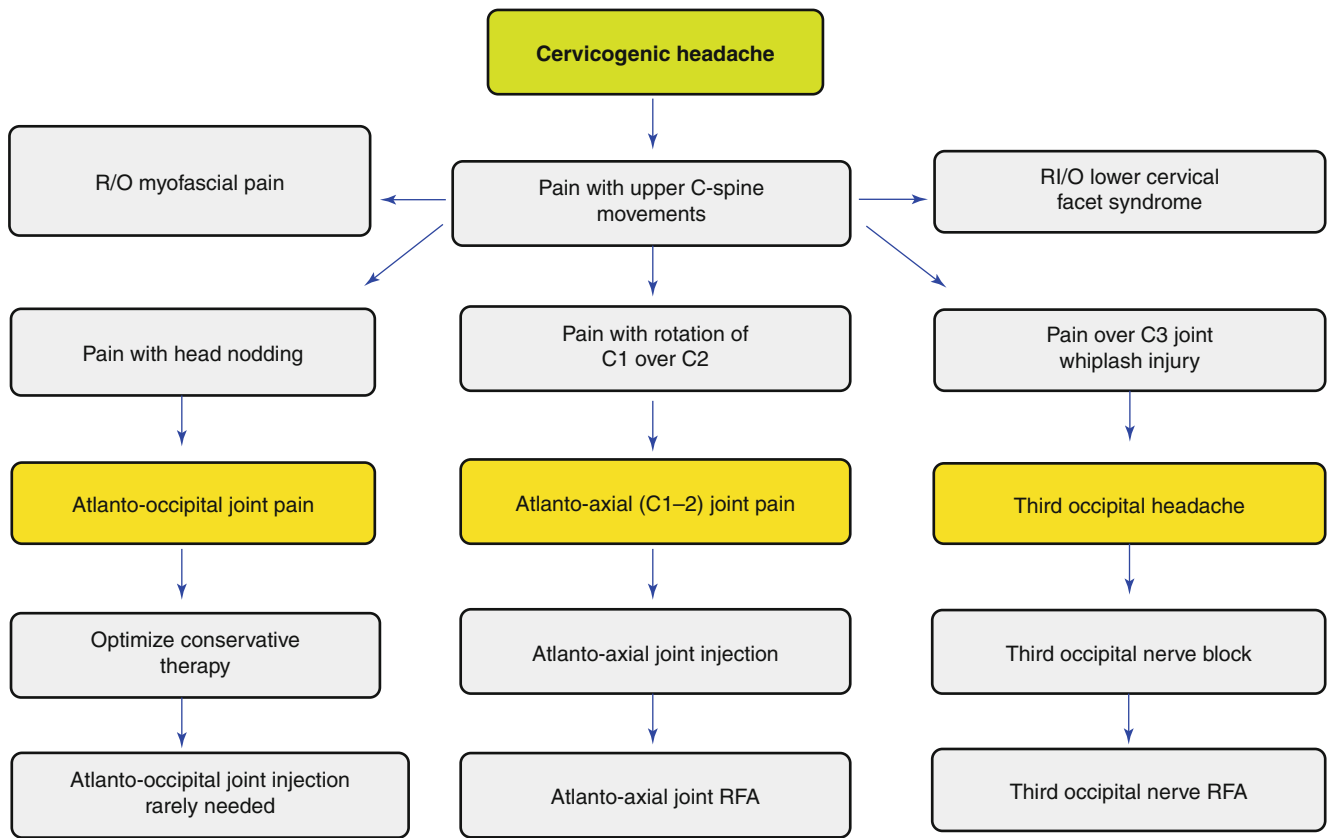


**Fig. 2.2** Medications overuse headache (MOH)

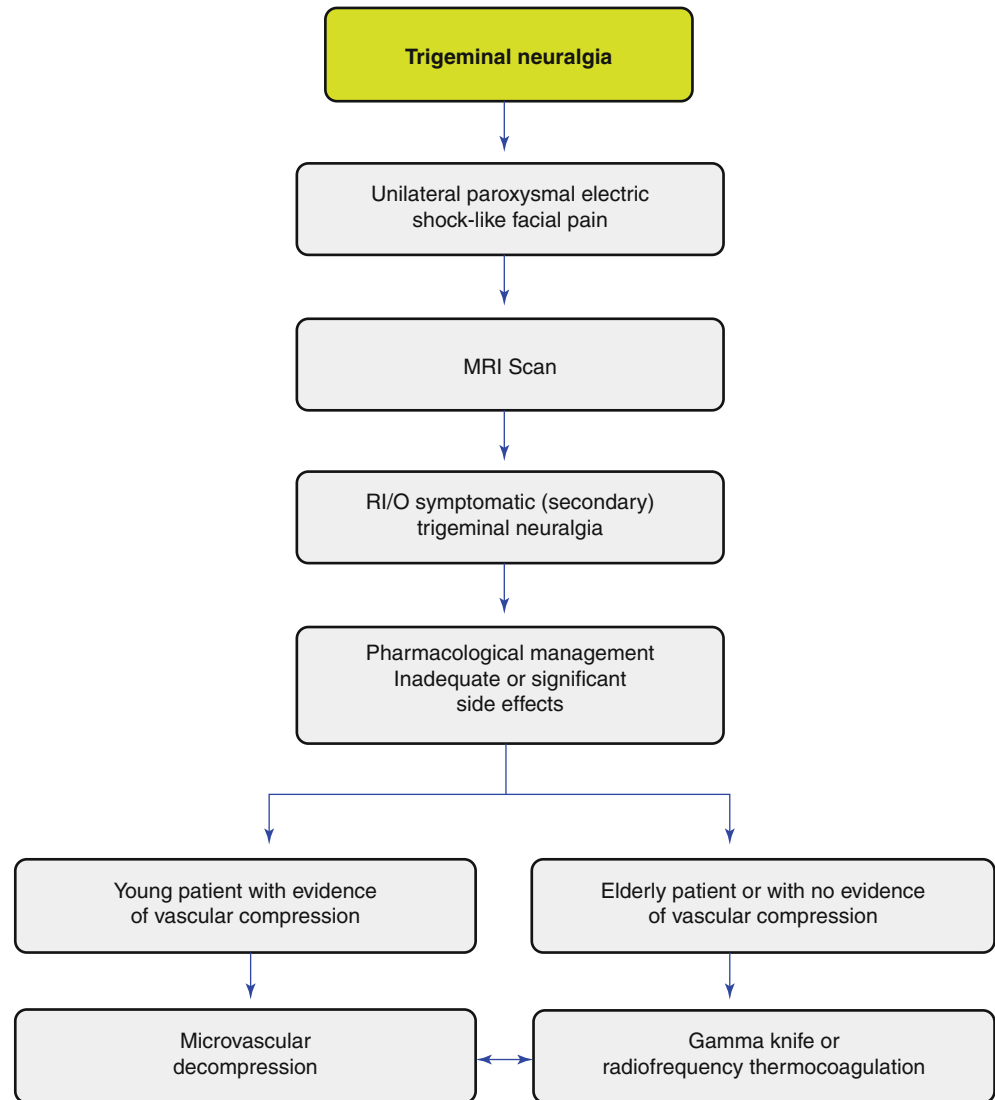




**Fig. 2.3** Occipital headache



**Fig. 2.4** Cervicogenic headache

**Fig. 2.5** Trigeminal neuralgia



<http://www.springer.com/978-1-4614-8950-4>

Interventional Management of Head and Face Pain  
Nerve Blocks and Beyond  
Narouze, S.N. (Ed.)  
2014, XVI, 154 p. 113 illus., 64 illus. in color., Hardcover  
ISBN: 978-1-4614-8950-4